



SERVING TEAM GUIDE

Shepherd's Gate **ADULTS**



*WE EXIST TO
IMPACT THE
WORLD WITH
THE LOVE OF
JESUS.*

*WE WILL VALUE
EVERY[ONE] WE MEET.*

*WE WILL INFLUENCE
EVERY[WHERE] WE GO.*

*WE WILL LIVE
GENEROUSLY WITH
EVERY[THING] WE HAVE.*

WELCOME

Welcome to the Adults Team!

We share a passionate love for the Lord and want people to know and grow in the knowledge of His love and grace. We believe the spiritual gifts that God has given you will help the Adults Team to reach our mission—to impact the world with the love of Jesus.

Introductions Please...

The Adults Team is about helping people enter the SG Path by engaging in Social Groups and Life Groups and expanding with Bible Study Groups. In all our adult groups we consider our church vision; that we value everyone we meet, influence everywhere we go, and live generously with everything we have. Working together we will create welcoming and safe places for people to get to know the family of Shepherd's Gate Church, become part of a tight-knit group, and become a disciple for Christ. We believe it is important to have fun in fellowship as well as grow in our knowledge of who God is and in our walk with Jesus Christ. Our Adults Team strives to find and implement innovative ways to meet everyone where they are.

HOW SERVING WORKS

1

TRAINING

We offer training to new team leaders and assistance when necessary. We offer annual training to current team leaders, bringing fresh ideas and new programs to the team.

PREPARATION

Some groups require more time for preparation than others. The more prepared the team leaders are the more the participants feel valued and stay engaged with the group.

Some groups require materials for Bible studies. The Adults Team Staff will guide team leaders in choosing and obtaining material.

3

SCHEDULING

Each group is unique with their scheduled meeting time. Social Groups usually meet monthly but can meet more often. Life Groups typically meet twice a month and Bible Groups meet weekly or no less than twice a month. The Adults Team will assist in scheduling day, time, and the place for meeting.

SHEPHERDING

It is important that every team leader takes on the role of shepherd. Staying in contact with the participants is important to ensure they are engaging and expanding on the SG Path. When a participant is absent, we encourage follow up. Promoting prayer among the group will help keep the group connected and accountable.

5

DISCIPLE MAKING

As we engage with one another we build relationships and when we add the element of God's Word we expand into the life of Christ and our work on earth. This is Jesus' command, to build disciples (Matthew 28:19-20). We prayerfully ask the Holy Spirit to give us the ability to guide members toward a life of discipleship.

2

4

ADULTS TEAM VALUES

SIGN UP TO SERVE AT:
sgatechurch.org/servetoday



SPIRITUAL GIFTS

We know the Holy Spirit gifts everyone in special ways so that together we can make up the Body of Christ and do His work to further the gospel message.



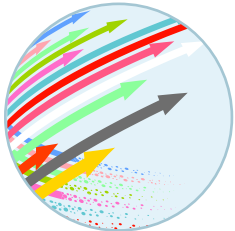
TIME

We value every[one]'s time. Every member of the team agrees to give a portion of their time to serving depending on the need of the group they are leading. It is important for every team member to have a healthy awareness of the time they put into serving. Taking personal time to rest and regenerate is important for every team member.



LOVE

Jesus said the second greatest commandment is to love your neighbor as yourself (Matt. 22:39). We love and respect one another. We also speak truth in love to one another remembering Jesus was gracious when He spoke truth.



EXCELLENCE

We expect everyone to give their utmost best as they serve the LORD, not perfection. Giving our excellence glorifies God and builds the team.



GOD'S WORD

We stand with the Lutheran Missouri Synod that God's Word is true and inspired by God. God's Word is the story of redemption for all people through the life, death and resurrection of Jesus. Today we have the Holy Spirit as our comforter, guide and who empowers us to do God's work.

FAQ'S

frequently
asked
questions



What does the Social Group team member do?

Social groups are about interests and hobbies. The team member sets dates & times for the group to meet & engage in a relaxed and fun setting where friendships can be built.

What are the responsibilities of the Life Group team member?

Life Groups are a place where you can come together with others to do life and grow in faith. The team member is responsible for scheduling the meeting time and place, usually twice a month, and overseeing the meeting. The team member is also responsible for providing a Bible study lesson or devotion and setting aside prayer time for the group.

What are the responsibilities of the Bible Group team member?

The focus of this group is the Bible, a specific book or topical study along with

guided material. The team member leads the group, either presenting the material and adding some teaching points or facilitating group discussion.

How long am I expected to serve?

That depends on the group and/or your circumstances. We ask for at least a one-year commitment.

What if I find I do not like the position on the team?

If the position is not what you expected we will ask first that you have given time to pray, seeking answers to why & where God might be guiding you to serve. We will also pray along side you for clarity. We will not ever force anyone to remain on the team.

What do I do if I am no longer able to serve?

If you are no longer able to serve because of unexpected situations we will prayerfully guide you as you leave a group. We know

God provides and we would ask if anyone in the group may be able to continue to serve and join as a team member.

What do I do if I must miss a meeting?

If you are unable to attend a scheduled meeting, we ask that you let the Team Leaders know. We can assist you with providing a substitute leader from within your group, or another leader equipped to lead.

What do I do if there is a conflict within the group I am leading?

We all face unforeseen situations that might result in conflict with members of a group who have differing opinions. Whether it is a social, political, or biblical conflict we ask that the team member informs the team leaders. We first go to God in prayer, we will then counsel the team member, and in situations when resolution is not achieved, we will mediate. If the conflict is of a sensitive nature the team leaders may consult with the lead pastor.

EXPECTATIONS OF OUR TEAM LEADERS

The Team Leaders are committed to train and equip team members to serve God and His people. We will promote all the groups on the SG website, on social media, and help obtain materials as needed. You can depend on us to be ready to help you serve joyfully, impacting the lives of the people in your group. We are committed to pray for you as you lead and are available to help you with any situation that might arise.

Team Member implies you are part of the whole group, not one part is any more important than another in the Body of Christ. We reflect one another and God. You are expected to be prepared to lead, to be on time to lead your group,

and ready to pivot when unforeseen situations arise.

We expect team members to be welcoming and gracious, good listeners, and give godly advice when it is needed.

We do not expect any team member to be a biblical scholar but rather to love the Lord and depend on the Holy Spirit's work to enable and empower. You can rely on us when unforeseen or challenging situations arise within your group where we will guide you and/or intervene.

SIGN UP TO SERVE AT:
sgatechurch.org/servetoday

ADULTS

SOCIAL GROUP LEADER

What they do:

Communicate with and make arrangements for the group's event; place, date, and time.

When they do it:

Dependent on the type of group. Could be weekly or monthly.

How often:

Dependent on the type of group. Most social groups meet once or twice a month and some are seasonal.

You'll like it if:

You enjoy people, social gatherings and like planning events.

LIFE GROUP LEADER

What they do:

Lead a group of adults with a focus on making life-long friendships and strengthening their relationship with God. You will facilitate a Bible study or devotional at each meeting and lead the group in prayer.

When they do it:

Any day/time of the week determined by the group.

How often:

Twice a month

You'll like it if:

You love the Lord and His people.

BIBLE STUDY LEADER

What they do:

Facilitate or teach a Bible study; a particular book of the Bible or a topical study based on biblical principles.

When they do it:

When Bible Studies meet, in the mornings, afternoons or evenings depending on the day. You will host the group on campus or online.

How Often:

Studies run from six to ten weeks between September and June.

You'll like it if:

You enjoy sharing God's Word with others.

ADULTS ADMIN

What they do:

Assist the Adults Team Staff with various administrative tasks such as event planning, material preparation and running errands.

When they do it:

At various times, but mostly during the work week.

How Often:

As needs arise.

You'll like it if:

Enjoy serving behind the scenes and using your administrative skills.

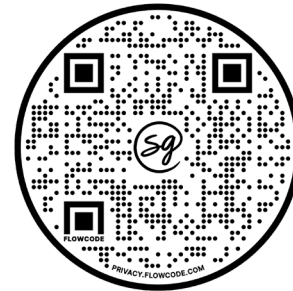
Romans 7:6

“But now we are released from the law, having died to that which held us captive, so that we serve in the new way of the Spirit and not in the old way of the written code.”

HOW DO I SIGN-UP TO SERVE?



VISIT OUR WEBSITE AT
sgatechurch.org/servetoday



Shepherd's Gate

HAVE QUESTIONS?

WE'VE GOT ANSWERS!

EMAIL adults@sgatechurch.org