

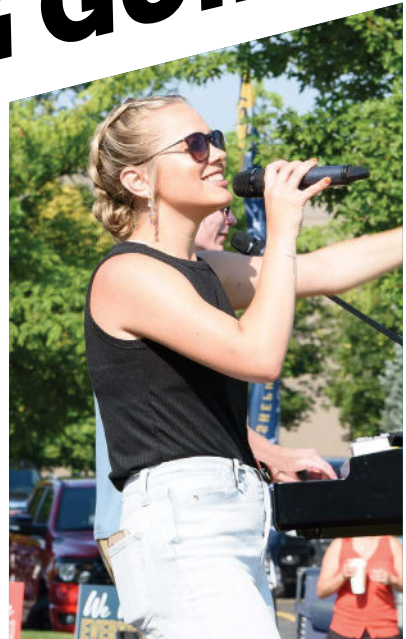


**We exist to impact
the world with
the love of Jesus.**



SHEPHERD'S GATE CHURCH

SERVING GUIDE



thanks

for your interest in serving!

As you investigate the various options, you'll find simple, detailed descriptions for each serving opportunity. Have fun exploring then **scan the QR code and fill out the online form** to let us know which opportunities interest you the most. The appropriate team leader will be in touch with more information and next steps. We can't wait for you to start your serving adventure!



scan for all serving opportunities

sgatechurch.org/serve



FREQUENCY icons



WEEKLY



MONTHLY



2X MONTH



AS NEEDED/
SEASONAL

ADULTS TEAM

Social Group Leader.....	3
Life Group Leader.....	3
Bible Study Leader	3

CARE TEAM

Coaches	4
Greeters.....	4

COMMUNICATIONS TEAM

Photographer	5
Blog Writer	5
Social Media Contributor	5
Video Host.....	6
Videographer/Editor.....	6

FACILITY/GROUNDS TEAM

Gardeners.....	7
----------------	---

KIDS & STUDENTS TEAM

Students	7
Kids.....	8
Nursery.....	10

SPECIAL EVENTS TEAM

Food Team.....	12
Family & Adults	12
Fun Squad	13

WELCOME TEAM

Altar Team	14
Chair Team & Greeter Team	14
Live Chat Host Team.....	15
Parking Lot Team	15
Prayer Team	15
Refreshment Team	16
Usher Team	16
Welcome Center Team.....	16

WORSHIP ARTS TEAM

Worship	17
Tech	18
Stage Design.....	19

Adults *team*

SOCIAL GROUP LEADER [frequency]

What They Do:

Lead a group that meets around a common interest like biking or homeschooling.

When They Do It:

Dependent on the type of group. Could be weekly or monthly.

You'll Like It If:

You enjoy sharing your hobby and activity with others in a social setting and you enjoy event planning.

LIFE GROUP LEADER [frequency]

What They Do:

Lead a group of adults with a focus on making life-long friendships and strengthening their relationship with God. You will facilitate a Bible study or devotional at each meeting and lead the group in prayer.

When They Do It:

Any day/time of the week determined by the group. (Six to ten week sessions.)

You'll Like It If:

You love the Lord and His people.

BIBLE STUDY LEADER [frequency]

What They Do:

Facilitate or teach a Bible study; a particular book of the Bible or a topical study based on biblical principles.

When They Do It:

When Bible studies meet, in the mornings, afternoons or evenings depending on the day. You will host the group on campus or online.

You'll Like It If:

You enjoy sharing God's Word with others.

Care *team*

Frequency
Icon Key

COACHES: ADULTS & KIDS [frequency]

What They Do:

Facilitate Care Group meetings, run videos, handle discussions, and take attendance. Tools provided to lead the class including videos, books, and leader guides.

When They Do It:

Tuesday evenings from 6-8:30p or Tuesday afternoons from 1-3p. (Most sessions are 13-weeks long.)

You'll Like It If:

You have a strong passion for helping people, you are a good listener, can keep information confidential and are dedicated to serving in God's way through prayer.

GREETERS [frequency]

What They Do:

Greet people with a warm welcome at the door and direct them to dinner. Show people where classrooms/restrooms are.

When They Do It:

Tuesday evenings from 6-7p. (Most sessions are 13-weeks long.)

You'll Like It If:

You are friendly and engaging, you like meeting new people and helping others.



scan for all serving opportunities

sgatechurch.org/serve

Communications *Team*

PHOTOGRAPHER [frequency]

What They Do:

Capture the essence of Shepherd's Gate by taking captivating images at weekly services and special events.

When They Do It:

Sunday mornings or during various events at Shepherd's Gate.

You'll Like It If:

You have a passion for photography, an eye for catching images that evoke emotion, and experience using a DSLR camera.

BLOG WRITER [frequency]

What They Do:

You will use your creative, faith-minded writing skills to tell stories and educate our community on a variety of topics.

When They Do It:

At various times remotely (at home).

You'll Like It If:

You are creative-minded, enjoy writing as an outlet to express your faith and imagination, and have strong writing, grammar, and punctuation skills.

SOCIAL MEDIA CONTRIBUTOR [frequency]

What They Do:

Engage & connect with our followers on social media by creating stories, reels, and/or other content.

When They Do It:

Sunday mornings, at events and as scheduled by the team leader.

You'll Like It If:

You enjoy engaging with others on social media, understand major social media platforms and how people socialize online, and have a desire to impact the world with the love of Jesus.

VIDEO HOST [frequency]

What They Do:

Appear on camera to introduce, narrate & provide engaging announcements to our church community.

When They Do It:

On a rotating basis. About every other month.

You'll Like It If:

You have an outgoing personality, strong communication skills, and the ability to deliver scripted material in a natural and engaging manner.

VIDEOGRAPHER/EDITOR [frequency]

What They Do:

Film and edit video for worship services and promotion of Shepherd's Gate programs & events.

When They Do It:

On a per project basis, usually during the week for filming and editing.

You'll Like It If:

You enjoy communicating and telling stories through video. You have some experience filming with DSLR cameras and editing video via Final Cut or Adobe Premiere Pro.



scan for all serving opportunities

sgatechurch.org/serve

Facility *team* & Grounds

GARDENERS [frequency]

What They Do:

Use their green thumbs to help beautify the grounds by planting/maintaining flower beds at SG.

When They Do It:

Spring, summer, and fall.

You'll Like It If:

You love gardening & flowers and don't mind a little bit of dirt.

Students *team*

(7th to 12th Grade)

SMALL GROUP LEADER [frequency]

What They Do:

Engage with students, making them feel valued; lead discussions about the message given at Student Night (questions provided), follow up with discussions or use materials provided by Student Director for small group meetings; encourage students in their faith.

When They Do It:

Student Night Wednesdays and Small Group meeting times.

You'll Like It If:

You like to lead students/teens in discussion, want to help teens grow in their faith and like relationship building with the next generation.

Kids *team*

(Pre-K to 6th Grade)

ADULT/TEEN LEADER [frequency]

What They Do:

Supervise the classroom, guide small groups through activities, bond with kids & communicate with parents. Some leaders will present the message to the large group, plan and run games or lead special events.

When They Do It:

Sunday mornings, Wednesday nights and/or special events.

You'll Like It If:

You love sharing Jesus with kids, like to have fun, interact well with this age range, don't mind a little bit of chaos.

SPECIAL BUDDY [frequency]

What They Do:

Partner with one kid with sensitivities, assist them with participation & movement between activities & rooms.

When They Do It:

Sunday mornings or Wednesday evenings.

You'll Like It If:

You enjoy one-on-one time with our friends who have special needs or need a little more assistance moving from room to room and engaging in activities.

Frequency Icon Key



CHECK-IN [frequency]

What They Do:

Greet families and assist with check-in and new registrations.

When They Do It:

When SG Kids gather on Sunday mornings or Wednesday evenings.

You'll Like It If:

You have a knack for making sure processes are efficient and move quickly without feeling rushed. You are always on time and making people feel welcome makes you smile.

SET UP [frequency]

What They Do:

Prep materials, set up rooms for Sunday/Wednesday Kids, organize closets, monitor supply levels.

When They Do It:

Friday/Saturday, Wednesday morning, or a day that fits your schedule.

You'll Like It If:

You like working behind the scenes and organizing things.

SAFETY [frequency]

What They Do:

Greet kids at check-in, monitor the hallway and assist with kids, check parent's and kid's tags at pick-up.

When They Do It:

Sunday mornings or Wednesday evenings.

You'll Like It If:

You enjoy greeting people who walk through our doors, can multitask, and have the ability to monitor the Kids area to keep everyone safe.



WEEKLY



MONTHLY



2X MONTH



AS NEEDED/
SEASONAL

TECH [frequency]

What They Do:

Operate the sound board and Pro Presenter to display images and videos.

When They Do It:

Sunday mornings or Wednesday evenings.

You'll Like It If:

You enjoy being in the background making things flow well and are a little tech-savvy.

Nursery team

(Infants & Toddlers)

NURSERY VOLUNTEER [frequency]

What They Do:

Assist with check-in and play with, sing to, feed, comfort and encourage kids.

When They Do It:

Options include Sunday and Thursday mornings, Tuesday and Wednesday evenings & other times as needed including church holidays.

You'll Like It If:

You love spending time with little ones, enjoy interacting with them, feel drawn to calm them when they are upset and want to share God's love with them.

Nursery team

(Infants & Toddlers)

PRE-K ADULT/TEEN VOLUNTEER [frequency]

What They Do:

Volunteers will supervise the classroom, guide small groups through learning and activities, bond with the kids and communicate with parents. Some volunteers will present the message to the large group or plan activities.

When They Do It:

Sunday mornings as needed.

You'll Like It If:

You love sharing Jesus with young kids, like to be a kid and have fun, interact well with this age range, don't mind a little bit of chaos, and are reliable.

CRAFT PREP TEAM [frequency]

What They Do:

Assemble craft packets for SG Kids and Special Service Sundays.

When They Do It:

Typically a weekday.

You'll Like It If:

You like assembling craft packets while socializing.



scan for all serving opportunities

sgatechurch.org/serve

Special Events team

Frequency
Icon Key

FOOD TEAM [frequency]

What They Do:

Prepare and serve food and refreshments at SG functions.

When They Do It:

Regular opportunities include Wednesday Student Nights and Midweek Refresh, Sunday morning breakfast for tech and worship team members, Outdoor Service lunches, and Care Program nights. There is also a team that stands by for funeral luncheons, which are typically catered, and are often Friday and Saturday mornings.

You'll Like It If:

You secretly consider yourself an Iron Chef—in other words you enjoy preparing and serving food. You like caring for the physical needs of others, creating a welcoming and comfortable experience, and enjoy working with a team.

FAMILY & ADULT EVENTS [frequency]

What They Do:

Help produce well-run family/adult events a few times a year. You may also volunteer in areas such as Midweek Refresh (kids activities, assisting with classes and studies, setup/teardown), group leading and hosting, and facilitating Bible studies.

When They Do It:

Family and adult events are scheduled throughout the year and Midweek Refresh has 6 week sessions on Wednesday nights 3 times a year. Groups and Bible Studies meet at various times and locations throughout the year.

You'll Like It If:

You have a passion for serving others and enjoy organizing and prepping for events.



Special Events *team*

FUN SQUAD [frequency]

What They Do:

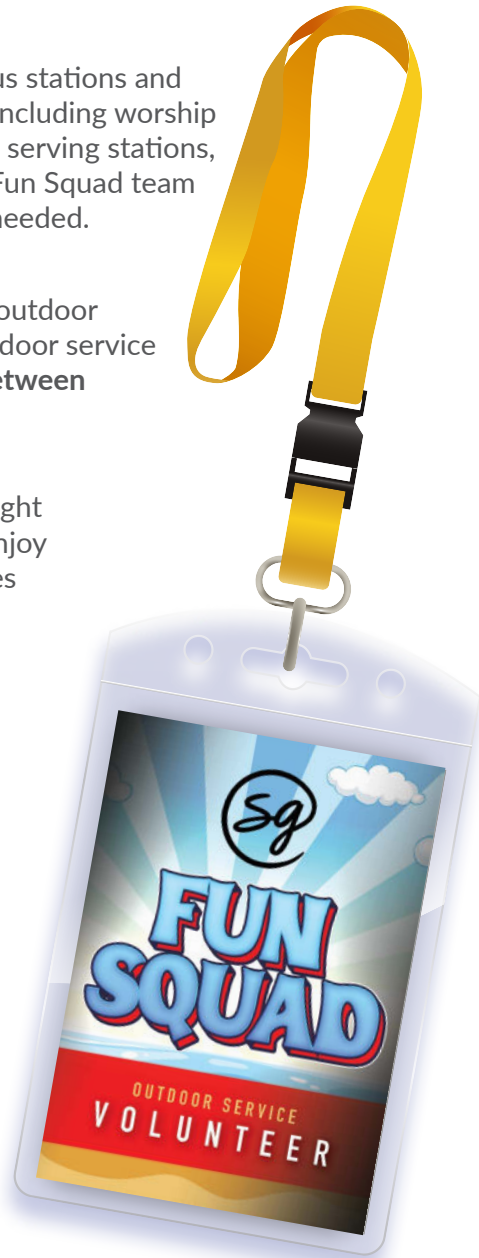
Set up and tear down the various stations and areas for our outdoor services, including worship equipment, usher stations, food serving stations, and kid/student activity areas. Fun Squad team members also run activities as needed.

When They Do It:

The Fun Squad deploys for our outdoor services, between 8a-1p on outdoor service Sundays. Typically 4 services between June-September.

You'll Like It If:

You like being outdoors, enjoy light to moderate physical activity, enjoy being part of a team that focuses on serving others, and have a heart for serving guests at SG (outdoor services have a high rate of guest attendance).



Welcome *team*

Frequency
Icon Key

ALTAR TEAM [frequency]

What They Do:

Prepare and set up elements for service when we offer communion.

When They Do It:

Sunday morning and/or Special Services at Shepherd's Gate.

You'll Like It If:

You have a passion for keeping things clean and stocked for worshipers during services at Shepherd's Gate.

CHAIR TEAM [frequency]

What They Do:

Set up worship center chairs in the Gym each Saturday to prepare seating for worship services.

When They Do It:

Saturday mornings. Setup typically takes about 45-60 minutes.

You'll Like It If:

You like physical activity and setting the stage for ministry at SG. Each seat you set up represents a person who God loves and SG wants to welcome into our community.

GREETER TEAM [frequency]

What They Do:

Greet and warmly welcome all people entering the building by standing outside and opening doors.

When They Do It:

Sunday morning and/or at Special Services 30 minutes prior to service and 15 minutes after service.

You'll Like It If:

You have a passion for making people feel welcome and "at home."



Welcome *team*

LIVE CHAT HOST [frequency]

What They Do:

Host the live chat for online services by communicating important information, chatting with viewers and answering questions.

When They Do It:

Sundays during worship services and other special services, either on campus or from home.

You'll Like It If:

You are comfortable chatting online, you like encouraging people and getting them the info they need.

PARKING LOT TEAM [frequency]

What They Do:

Greet and warmly welcome all vehicles driving into our parking lot and direct them to an open spot.

When They Do It:

Sunday morning and/or at Special Services at SG 30 minutes prior to service and 15 minutes after service.

You'll Like It If:

You like to make a good first impression for guests and help people know where to go.

PRAYER TEAM [frequency]

What They Do:

Pray for the Welcome & Worship Teams and anyone requesting prayer before/after service. Text/pray with online viewers.

When They Do It:

8a to end of services on Sundays &/or special services on other days.

You'll Like It If:

You enjoy helping others through prayer, have compassion for people and are able to pray out loud in front of individuals or small groups.

Frequency Icon Key



REFRESHMENT TEAM [frequency]

What They Do:

Set up refreshment counters with beverages & snacks. Warmly welcome all people while maintaining cleanliness of the counters and kitchen. Clean up after the last service.

When They Do It:

Sunday mornings/special events. Before & after service.

You'll Like It If:

You believe providing delicious food and refreshing beverages is the key to creating a welcoming and enjoyable experience for everyone.

USHER TEAM [frequency]

What They Do:

Welcome all people attending worship services, help them find a seat and assist with needs or issues that may arise during services.

When They Do It:

Sunday mornings/special events. Before & after service.

You'll Like It If:

You enjoy guiding the logistics of larger crowds and making sure everyone has a comfortable place to worship.

WELCOME CENTER TEAM [frequency]

What They Do:

Answer questions and assist members and guests with event sign ups and downloading the Church Center App.

When They Do It:

Sunday mornings/special events. Before & after service.

You'll Like It If:

You enjoy filling in the blanks for people, answering questions, and guiding them to the information they need.

Worship team

WORSHIP BAND MEMBER [frequency]

What They Do:

Play an instrument in the worship band that leads the congregation during Sunday morning services and other special services.

When They Do It:

Thursday evening rehearsal & Sunday morning service.

You'll Like It If:

You can proficiently play an instrument, enjoy playing with others, can take direction, and have a love for worship and worship music.

WORSHIP TEAM VOCALIST [frequency]

What They Do:

Sing in the worship band that leads the congregation during Sunday morning services and other special services.

When They Do It:

Thursday evening rehearsal & Sunday morning service.

You'll Like It If:

You can sing proficiently, harmonize, and communicate worshipful leadership onstage.



scan for all serving opportunities

sgatechurch.org/serve

Tech team



CAMERA OPERATOR / VIDEO SWITCHER [frequency]

What They Do:

Work together in a tight-knit team to broadcast, capture and communicate about next steps during the service. This team brings SG to our online community.

When They Do It:

Sunday mornings regularly and during weekday services.

You'll Like It If:

You enjoy getting creative with points of view and creating moments for our online viewers. You're easy going, adaptable and can learn to adjust quickly.

PROJECTION [frequency]

What They Do:

Run lyrics, graphics, lighting cues, and videos for services.

When They Do It:

Sunday mornings and during services that occur during the week.

You'll Like It If:

You enjoy being behind the scenes, have an eye for detail, can quickly learn how to add cues into a program and smoothly pivot at the drop of a hat with any changes that might occur during service.

SOUND TECH [frequency]

What They Do:

Operate and adjust audio tech for weekly services & special events.

When They Do It:

Sunday mornings and during services that occur during the week.

You'll Like It If:

You find yourself adjusting other people's radios and have an eye and ear for details while multitasking.



Stage Design *Team*

STAGE DESIGN TEAM  [frequency]

What They Do:

Build custom stage designs for the Worship Center.

When They Do It:

Some team members help pre-build parts of the design on their own time as needed. Then the team meets on a weeknight or weekend to tear down the old stage and assemble the new one.

You'll Like It If:

You are handy or crafty, like interior design, and enjoy making a space welcoming for others.



**Scan for all serving opportunities
or visit sgatechurch.org/serve**

